

### Series GD

Force guided relay rated for 6A, 230/240 Vac, 300 Vdc Available in 4 pole configuration. Polarized DC Drive. See Table 1 for part numbers.

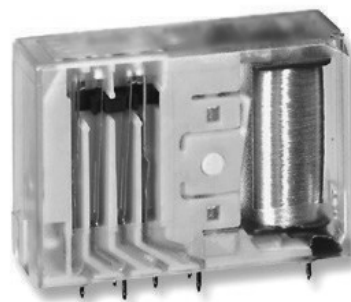
### ELECTRICAL SPECIFICATIONS

#### GENERAL SPECIFICATIONS

Parameter	Min	Typ	Max	Units
Operate Time (See Note 1)		17		msec
Release Time (See Note 1)		7		msec
Switching Frequency			5	Hz
Shock (11 msec, See Note 3)			10	g
Vibration (10-200 Hz, See Note 3)			5	g
Electrical Life	10 <sup>5</sup>			Cycles
Mechanical Life	10 <sup>7</sup>			Cycles
Ambient Temperature	-25		80	°C

#### CONTACT SPECIFICATIONS

Maximum Load Current				
1 Contacts			6	A
2 Contacts			4.2	A
3 Contacts			3.5	A
Maximum Switching Voltage			230/240	Vac
			300	Vdc
Maximum Load Capacity (Resistive)			1500/30	VA/W
Maximum Switching Capacity	AC15-230/240V	4		Arms
(Inductive)	DC13-24V	2		Adc
Contact Resistance (See Note 2)			100	mOhm
Dielectric Test Voltage (O=III, P=2)				
Coil to Contact			2500	Vac
Contact to Contact			2000	Vac



### FEATURES:

- Force Guided Contacts per EN50205: Consists of at least one NO and one NC contact mechanically linked. This allows the contact's behavior to be pre-determined and the user the ability to monitor the contact. The mechanism provides true status.
- Dielectric designed for 3-phase systems.
- Contacts are physically linked making it impossible for a NO and NC to be closed simultaneously.
- Internal creepage distances and clearances are designed for Overvoltage Category III and Degree of Pollution 2 per IEC 60664.
- Wide range of Contact configurations and Coil Voltages.

### APPROVALS:

CUL: Approved  
TÜV / VDE: Pending

### ACCESSORIES: Contact Factory

Current regulator unit DIL housing  
Current regulator unit SO.8 housing  
Removing tool  
Socket with soldering pins for PCB mounting  
Socket for conventional mounting.

